



STATE OF DELAWARE
DEPARTMENT OF TRANSPORTATION
800 BAY ROAD
P.O. Box 778
DOVER, DELAWARE 19903

JENNIFER COHAN
SECRETARY

VIA WEBSITE POSTING

December 29, 2017

Contract No. T201753109.01
Federal Aid Project No. DE-2017-001
Lewes Park & Ride and Maintenance Facility-Phase 2
Sussex County

Ladies and Gentlemen:

Enclosed is Addendum No. 2 for the referenced contract consisting of the following:

1. The Bid Proposal Cover, revised, to be substituted for the same page in the Proposal.
2. The following Plan Sheets have been revised and replaced: 110, 169, 170 and 172.

Plan Sheet 110: Vehicle Lifts have been removed

Plan Sheet 169: Removal of three (3) cameras

Plan Sheet 170: Adding six (6) cameras

Plan Sheet 172: Removing the hard wiring (data) to the vending machines and adding card readers to four (4) doors.

Please note the revisions listed above and submit your bid based upon this information.

Sincerely,

~signature on file~

Robert A. Kovacs
Competitively Bid Contracts Coordinator
Delaware Department of Transportation

STATE OF DELAWARE



DEPARTMENT OF TRANSPORTATION

BID PROPOSAL

for

CONTRACT T201753109.01

FEDERAL AID PROJECT NO. DE-2017-001

CFDA NO. 20.509 & 20.526

Lewes Park & Ride and Maintenance Facility-Phase 2

Sussex County

ADVERTISEMENT DATE: December 8, 2017

PROSPECTIVE BIDDERS ARE ADVISED THAT THERE WILL BE A MANDATORY PRE-BID MEETING THURSDAY DECEMBER 21, 2017 AT 2:00 P.M. IN THE DeIDOT ADMINISTRATION BUILDING, 800 BAY ROAD, DOVER, DELAWARE, 19903.

COMPLETION TIME: 383 Calendar Days

SPECIFICATIONS FOR ROAD AND BRIDGE CONSTRUCTION
DELAWARE DEPARTMENT OF TRANSPORTATION
AUGUST 2016

Bids will be received in the Bidder's Room at the Delaware Department of Transportation's Administration Building, 800 Bay Road, Dover, Delaware until 2:00 P.M. local time **January 9, 2018**

GENERAL NOTES

- A. EQUIPMENT LAYOUTS INDICATE GENERAL LOCATION OF EQUIPMENT. UNLESS SPECIFICALLY DIMENSIONED, EQUIPMENT SHALL BE INSTALLED IN GENERAL LOCATION INDICATED IN A MANNER WHICH AVOIDS CONFLICTS WITH ARCHITECTURAL, STRUCTURAL, MECHANICAL (HVAC M-SERIES), PLUMBING, AND ELECTRICAL FIXTURES.
- B. ALL EQUIPMENT SHOWN ON THESE DRAWINGS ARE BASED ON SPECIFICATIONS. MODIFICATIONS AND/OR SUBSTITUTIONS OF SAID EQUIPMENT IS SUBJECT TO COMPLETE COORDINATION BY CONTRACTOR OF ALL CONNECTIONS, SERVICES, OPENING SIZES, AND ANY OTHER CONSTRUCTION RELATED REQUIREMENTS AT THE CONTRACTOR'S COST.
- C. VERIFY AND COORDINATE ALL STRUCTURAL, MECHANICAL (HVAC M-SERIES), ELECTRICAL, PLUMBING, AND HVAC REQUIREMENTS OF EQUIPMENT WITH APPROVED MANUFACTURER PRIOR TO INSTALLATION.
- D. SEISMIC BRACE AND ANCHOR ALL EQUIPMENT, STORAGE, AND SHELVING AS REQUIRED PER MANUFACTURER'S RECOMMENDATIONS OR CODES AND PER SPECIFICATIONS.
- E. DO NOT INSTALL EQUIPMENT WITHOUT APPROVED SHOP DRAWINGS.

EQUIPMENT ABBREVIATIONS

- LC LUBE COMPRESSOR
- SH SHOP EQUIPMENT
- ST STORAGE EQUIPMENT
- TS TIRE SHOP EQUIPMENT
- VL VEHICLE LIFT EQUIPMENT
- VW VEHICLE WASH EQUIPMENT

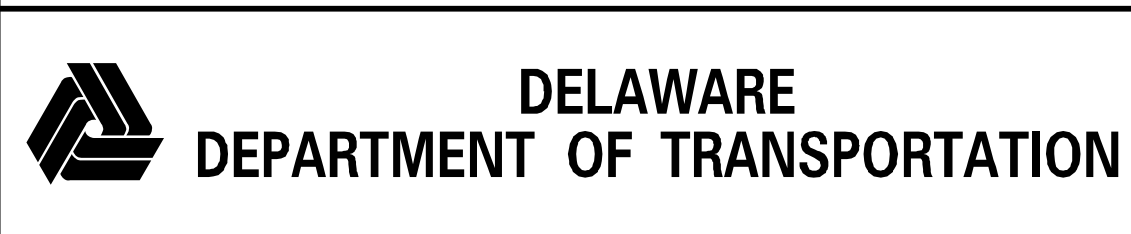
EQUIPMENT SCHEDULE

Mark #	Description	Spec Section	Remarks
CC308	Washer, parts, automatic, front loading	111100	
LC113	Press, oil filter	111100	
SH213	Buffer/grinder, 10", w/dust collector	111100	
SH237	Drill press, 20 inch, variable speed	111100	
SH255	Press, 50 ton, electric/hydraulic	111100	
TS201	Mounter/ demounter, tire, auto	111100	
TS205	Mounter/ demounter, truck tire	111100	
TS303	Wheel Balancer, Electronic, Fixed	111100	
LC251	Drop, utility, trapeze, with data	119010	
ST100	Rack, body panel, large	119010	
ST101	Rack, body panel, small	119010	
ST115	Rack, body glass	119010	
ST350	Workbench, heavy duty	119010	
VL806	Lift, vehicle, 4 post, mobile column, wireless	144500	N.I.C.
VL850	Lift, axle, scissor, 2 carriage, 60,000 lbs.	144500	N.I.C.
BR205	Charger, battery, portable	111100	Not shown on drawings
ES110	Workbench, electronics, anti-static top	111100	
SH101	Vise, combination, swivel base, 6"	111100	
SH221	Crimper, hydraulic hose	NIC	
SH291	Tank, parts cleaning, medium	111100	
SH332	Saw, cut-off, hydraulic hose	NIC	
SH580	Stand, engine/transmission, rolling	111100	Not shown on drawings
SH990	Scrubber, floor, riding	111100	Not shown on drawings
SH171	Dispenser, DEF, drum, portable	111100	Not shown on drawings
ST010	Bin unit, common, 66 opening	111100	
ST035	Cabinet, drawer, 59"	111100	
ST057	Cabinet, flammable materials, large	111100	
ST062	Cabinet, storage, shop	111100	
ST088	Ladder, safety, rolling, 10 step	111100	Not shown on drawings
ST110	Rack, gas cylinder, portable	111100	
ST120	Rack, pallet, w/ deck, 8'	111100	
ST156	Rack, tire, paratransit	111100	
ST165	Shelving unit, 18"	111100	
ST991	Pallet, containment	111100	
TS100	Cage, inflation, tire	111100	
TS215	Spreader, tire	111100	
WF030	Screen, welding	111100	Not shown on drawings
WF331	Welder, MIG, w/wire feed	111100	Not shown on drawings
WF400	Extractor, fume, portable	111100	Not shown on drawings
VW400	Washer, Vehicle, 4 Brush w/ Reclaim	115500	

SCHEDULE NOTES:

- 1. FOR ITEMS NOTED IN SCHEDULE AS "NOT SHOWN ON DRAWINGS" CONTRACTOR SHALL PROVIDE (1) EACH.
- 2. A COMPLETE LISTING OF ALL EQUIPMENT TO BE PROVIDED IS INCLUDED IN THE SPECIFICATIONS.

SHEET NAME & NUMBER



ADDENDUMS / REVISIONS
2 ADDENDUM 2

LEWES PARK & RIDE AND MAINTENANCE FACILITY - PHASE 2

CONTRACT	BRIDGE NO.
T20175.3109	
COUNTY	DESIGNED BY: NCL
SUSSEX	CHECKED BY: EJ

EQUIPMENT ABBREVIATIONS AND NOTES

SHEET NO.
110
TOTAL SHTS.
189

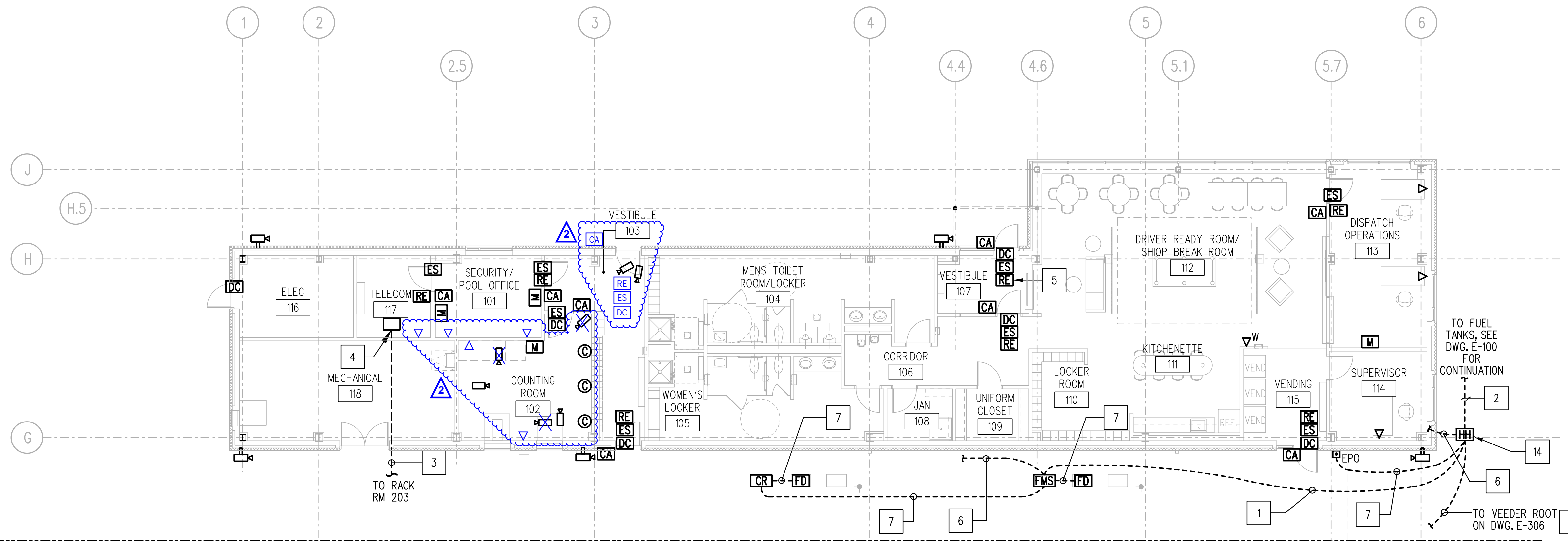
EL-001

GENERAL NOTES:

- SEE DRAWING E-001 THRU E-003 FOR LEGEND, ABBREVIATIONS AND GENERAL NOTES.
- COORDINATE EXACT CAMERA ANGLE AND VIEW WITH THE OWNER PRIOR TO FINAL ACCEPTANCE. ALL EXTERIOR CAMERAS SHALL BE WEATHERPROOF TYPE.
- PROVIDE CLASSIFIED SEALS FOR ALL CONDUIT STUBUPS TO FUEL DISPENSING EQUIPMENT.
- SEE DRAWINGS E-605, E-606, E-607 AND E-608 AND SPECIFICATIONS FOR INSTALLATION DETAILS AND WIRING REQUIREMENTS.
- PROVIDE 3/4" CONDUIT FROM EACH SECURITY AND ACCESS CONTROL DEVICE BACK TO RECK IN ROOM 117.

SPECIFIC NOTES:

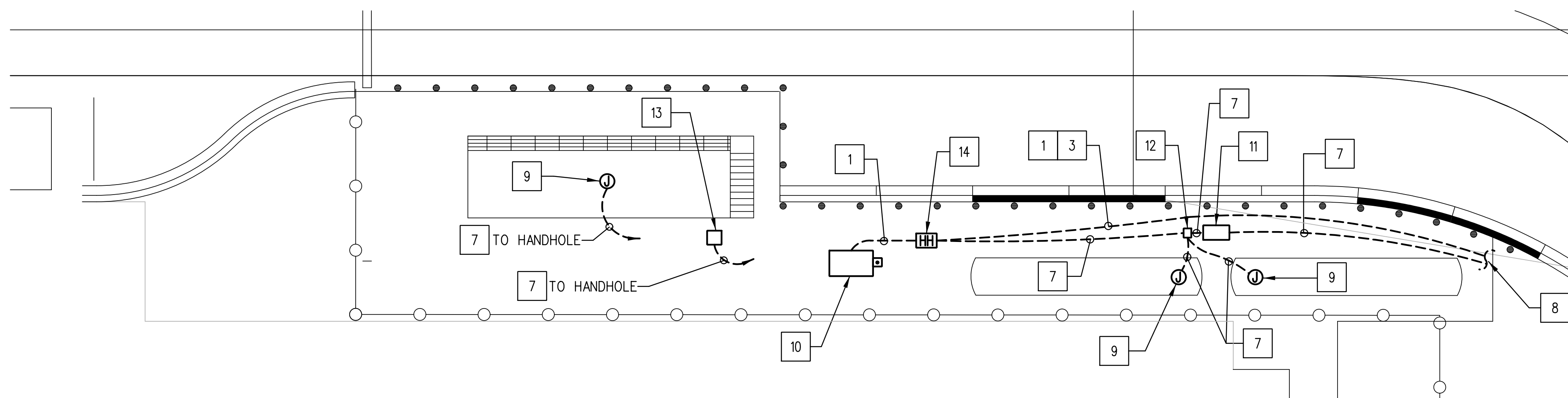
- 2" C. WITH PULL STRING.
- (1) 4" C., (1) 2" C., (1) 1" C. WITH PULL STRING.
- 4" C. WITH PULL STRING.
- 44U FLOOR MOUNTED RACK.
- CARD SWIPE TO RELEASE DOOR AND ACTIVATE OPERATOR. INTERIOR DOOR TO HAVE DELAYED RELEASE UNTIL EXTERIOR DOOR IS CLOSED AND SECURED.
- 2" C. WITH PULL STRING TO TELECOM ROOM 117.
- 1" C. WITH PULL STRING.
- SEE DRAWING E-100 FOR CONTINUATION.
- TANK, ACCESSORIES, ALARMS SENSORS.
- TANK CONTROL CABINET.
- PROPANE DISP.
- PROPANE CONTROLLER.
- FILL PORT.
- NEW HANDHOLE. SEE DETAIL 7/E-601 WITH NO DIVIDER.



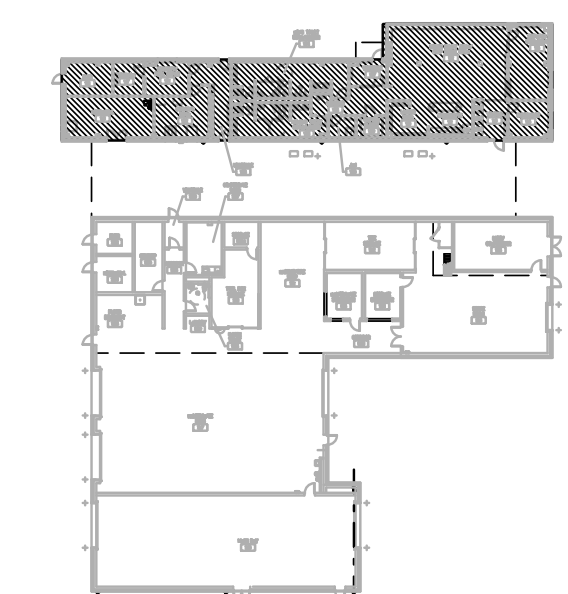
MATCH LINE - SEE E-306

MATCH LINE - SEE E-306

1 ELECTRICAL FLOOR PLAN - NORTH BUILDING - SPECIAL SYSTEMS
E-305 SCALE: 1/8" = 1'-0"



2 FUEL TANK AREA CONTROL/DATA PLAN
E-305 SCALE: 1/8" = 1'-0"

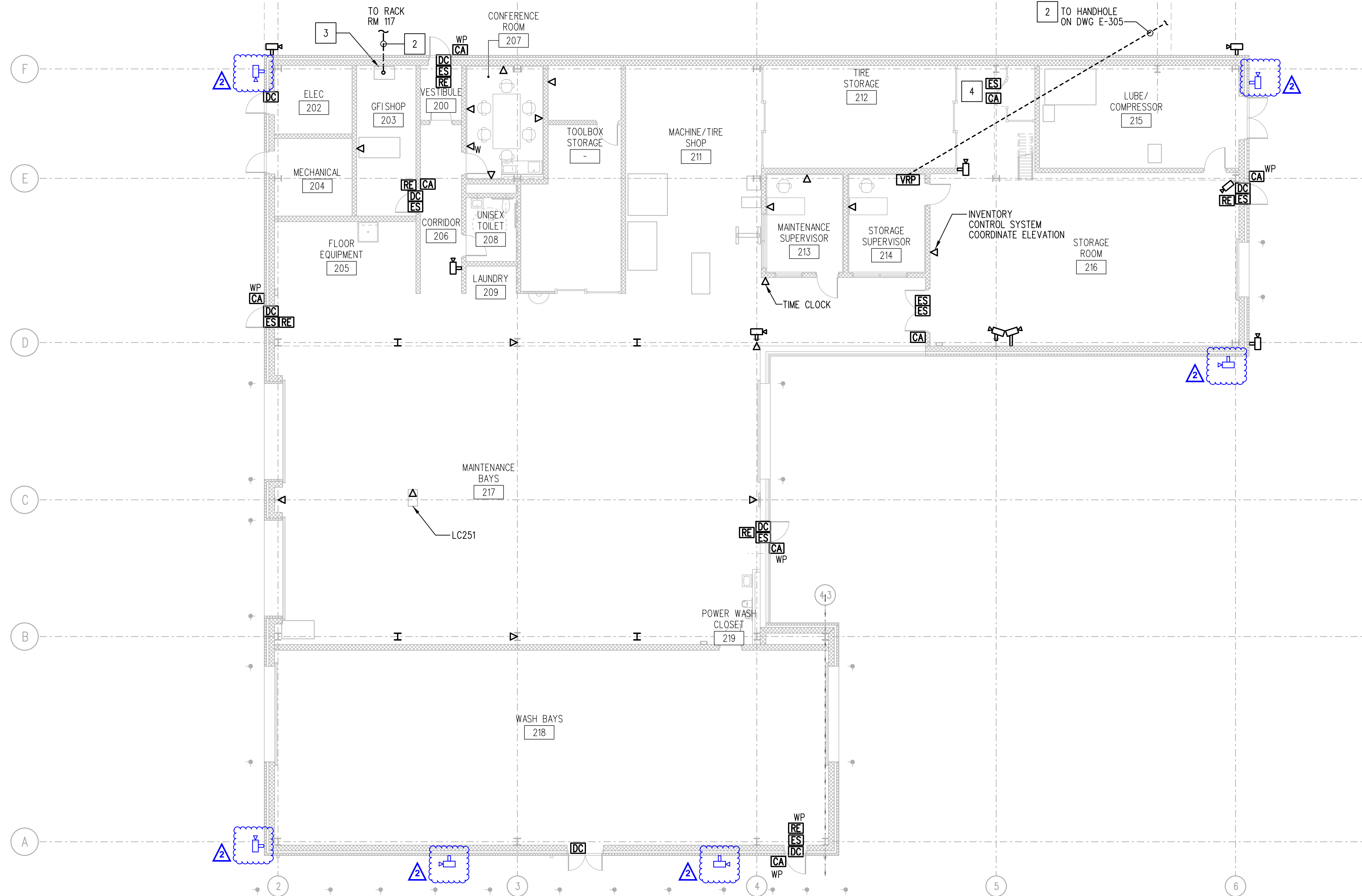


KEY PLAN
SCALE: N.T.S.

NO 9/25/09 09:30 AM C:\Users\CP01\OneDrive\Files\CP01-90181004E-305.dgn 27/2017 3:04:49 PM

MATCHLINE - SEE E-305

MATCHLINE - SEE E-305



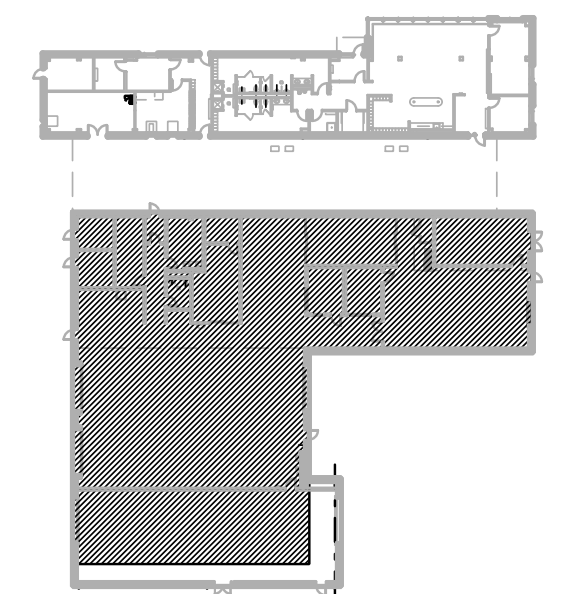
GENERAL NOTES:

- SEE DRAWING E-001 THRU E-003 FOR LEGEND, ABBREVIATIONS AND GENERAL NOTES.
- COORDINATE EXACT CAMERA ANGLE AND VIEW WITH THE OWNER PRIOR TO FINAL ACCEPTANCE. ALL EXTERIOR CAMERAS SHALL BE WEATHERPROOF TYPE.
- PROVIDE CLASSIFIED SEALS FOR ALL CONDUIT STUB UPS TO FUEL DISPENSING EQUIPMENT.
- SEE DRAWINGS E-605, E-606, E-607 AND E-608 AND SPECIFICATIONS FOR INSTALLATION DETAILS AND WIRING REQUIREMENTS.
- PROVIDE 3/4" CONDUIT FROM EACH SECURITY AND ACCESS CONTROL DEVICE BACK TO RECK IN RM 203.

SPECIFIC NOTES:

- 1" C. WITH PULL STRING.
- 4" C. WITH PULL STRING.
- 24U RACK.
- COORDINATE HEIGHTS WITH CAGE MANUFACTURER.

1 ELECTRICAL FLOOR PLAN - SOUTH BUILDING - SPECIAL SYSTEMS
 E-306 SCALE: 1/8" = 1'-0"



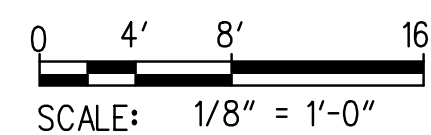
KEY PLAN
 SCALE: N.T.S.

No 19018-019_CADD Phase 1 Sheet Files CP-01-30181004E-306.dgn
 27/2017 3:50 PM



ADDENDUM 2

ADDENDUMS / REVISIONS



**LEWES PARK & RIDE
 AND MAINTENANCE FACILITY -
 PHASE 2**

CONTRACT T201753109	BRIDGE NO.
COUNTY SUSSEX	DESIGNED BY: MSM/SMC
	CHECKED BY: AP

**ELECTRICAL FLOOR PLAN
 SOUTH BUILDING
 SPECIAL SYSTEMS**

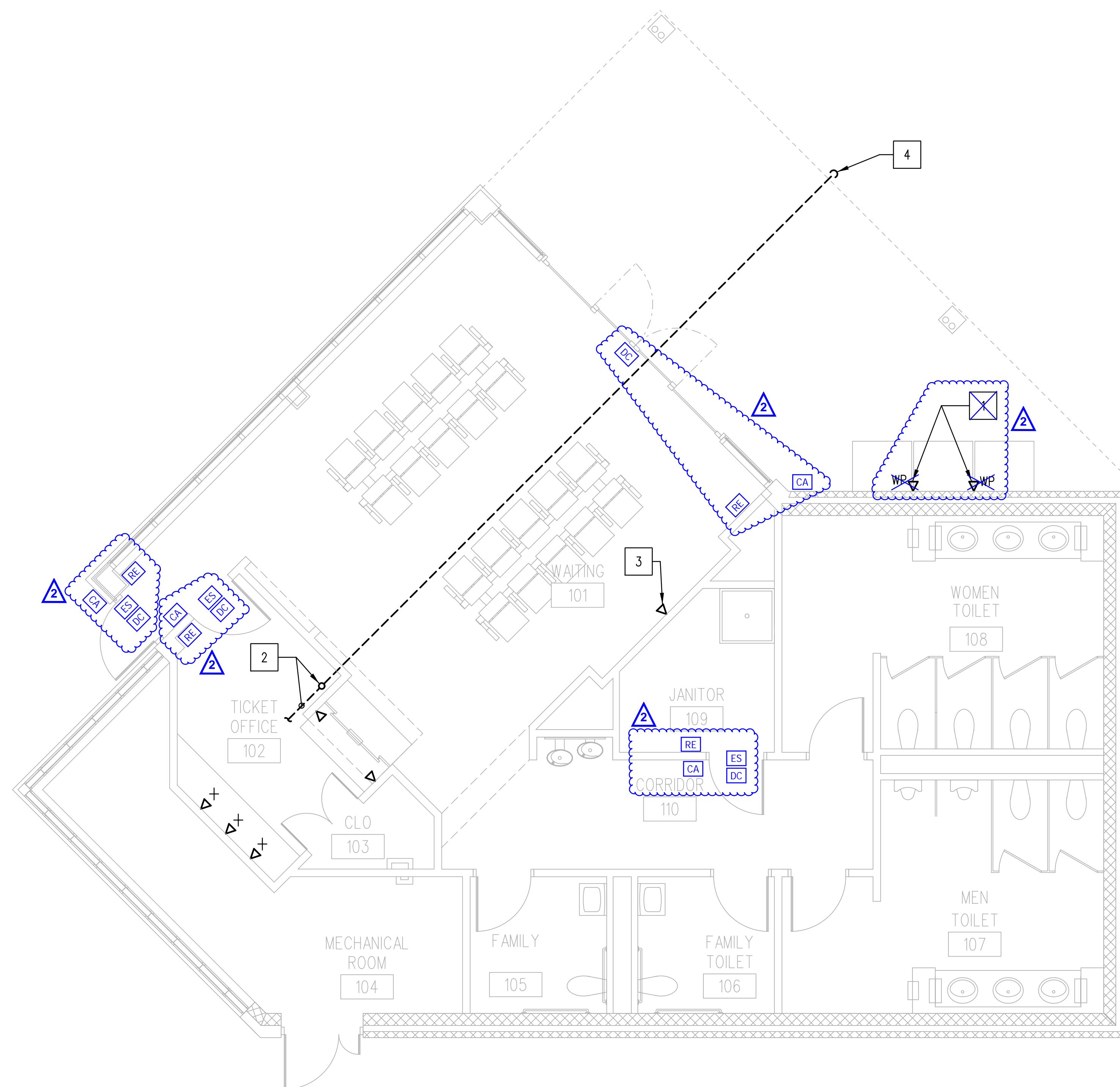
E-306
SHEET NO. 170
TOTAL SHTS. 189

DRAWING NOTES

1. SEE DWG. E-001 THRU E-003 FOR LEGEND, ABBREVIATIONS AND NOTES.
2. ALL ROUGH-IN PROVIDE 1" CONDUIT BACK TO IT RACK IN RM. 102.

CONSTRUCTION NOTES

- 2 X PROVIDE DATA ROUGH-IN FOR CARD-PAYMENT AND-INVENTORY TRACKING EQUIPMENT FOR VENDING MACHINES.
- 2 2" C STUB UP TO IT RACK. CONDUIT ROUTED UNDERGROUND TO HANDHOLE. SEE SITE PLAN FOR ROUTING.
- 3 COORDINATE EXACT LOCATION OF ROUGH-IN WITH SMART WALL DISPLAY SYSTEM.
- 4 PROVIDE (3) 1" C WITH PULL STRING UNDERGROUND AND CAP FOR FUTURE CANOPY INSTALLATION.



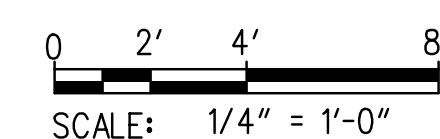
1 SPECIAL SYSTEM PLAN
E-308 SCALE: 1/4" = 1'-0"

MS 19/08-019 CAD/PL Page # Sheet Files CP02-90181018E-308.dgn
 02/27/2017 3:44:27 PM



2 ADDENDUM 2

ADDENDUMS / REVISIONS



**LEWES PARK & RIDE
AND MAINTENANCE FACILITY -
PHASE 2**

CONTRACT	BRIDGE NO.
T201753109	
COUNTY	DESIGNED BY: MSM
SUSSEX	CHECKED BY: IHK

**SPECIAL SYSTEM
FLOOR PLAN -
VISITOR CENTER**



E-308
SHEET NO.
172
TOTAL SHTS.
189